

MARKET HISTORY

Includes data through 8/2018

Delaware County, PA Single-Family



Market History Report

The Market History Report details current and historical statistical information for single-family listings recorded within TREND. This statistical report is organized by county and contains valuable month-over-month, year-over-year statistical information for each of the last 10 years. The Market History Report details activity in a particular market over a 10-year period – from where it's been to where it's at now. The easy-to-read month-over-month, year-over-year chart and graph enables you to clearly identify the year-over-year changes while accounting for seasonal and market trends.

Utilizing the report allows you to gain a better understanding of your market. This will give you new insights and increase your company's value when working with consumers. This powerful report is provided exclusively to TREND members.

Contents

Total Inventory	3
Inventory Accumulation	4
Pending Units	5
Settled Units	6
Total Settled Volume	7
Median Settled Price.....	8
Average Settled Price	9
Average Settled Price / Original Price.....	10

Definitions

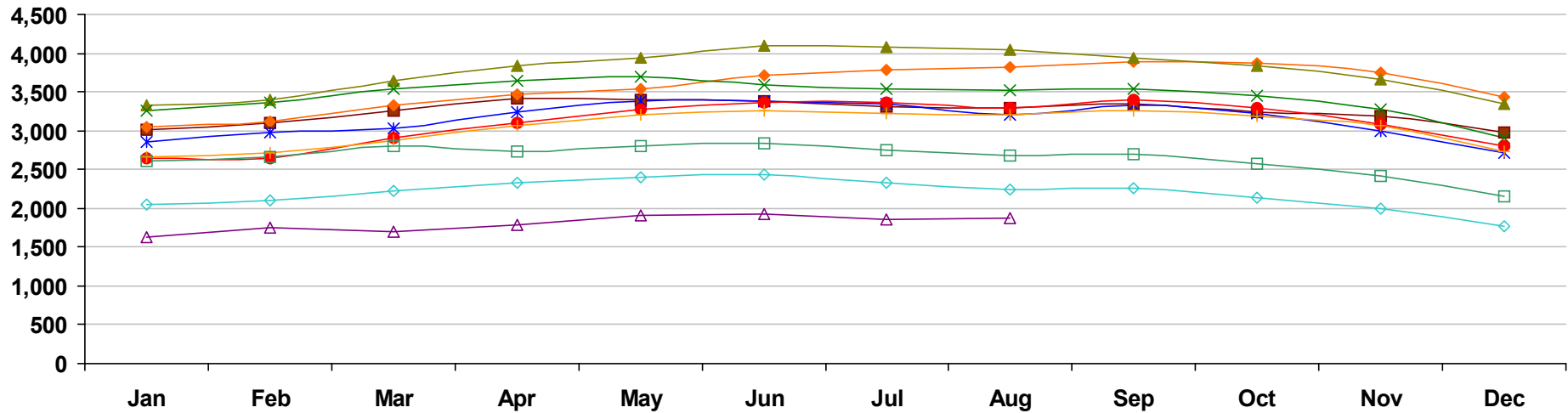
Total Inventory	The number of active single-family listings on the market on the last day of the specified month.
Inventory Accumulation	The number of months it would take to exhaust the current supply of single-family listings at the current absorption rate.
Absorption Rate	The average number of single-family listings sold in the market per month over the previous 12 months.
Pending Units	The number of single-family listings with Pending dates during the specified month.
Settled Units	The number of single-family listings with Settled dates during the specified month.
Total Settled Volume	The total dollar volume of single-family listings that have settled during the specified month.

Median Settled Price	The median price that single-family listings settled for during the specified month. Determined by arranging all Settled Listings in numerical order by price and then selecting the middle value.
Average Settled Price	The average price that single-family listings settled for during the specified month. Determined by dividing the Total Settled Volume by the number of Settled Listings.
Average Settled Price / Original Price	The average percentage of the Original Price that single-family listings settled for during the specified month. This number is determined by dividing the Settled Price by the Original Price for every listing, summing them and then dividing by the number of settled listings. TREND excludes listings if the Settled Price is greater than 150 percent or less than 50 percent of the Original Price. This ensures the percentage is more representative of listings in the market area.
Percent Change	The change in value as compared to the same month of the previous year. Indicated by +/-0.0%.

Notes on Statistics

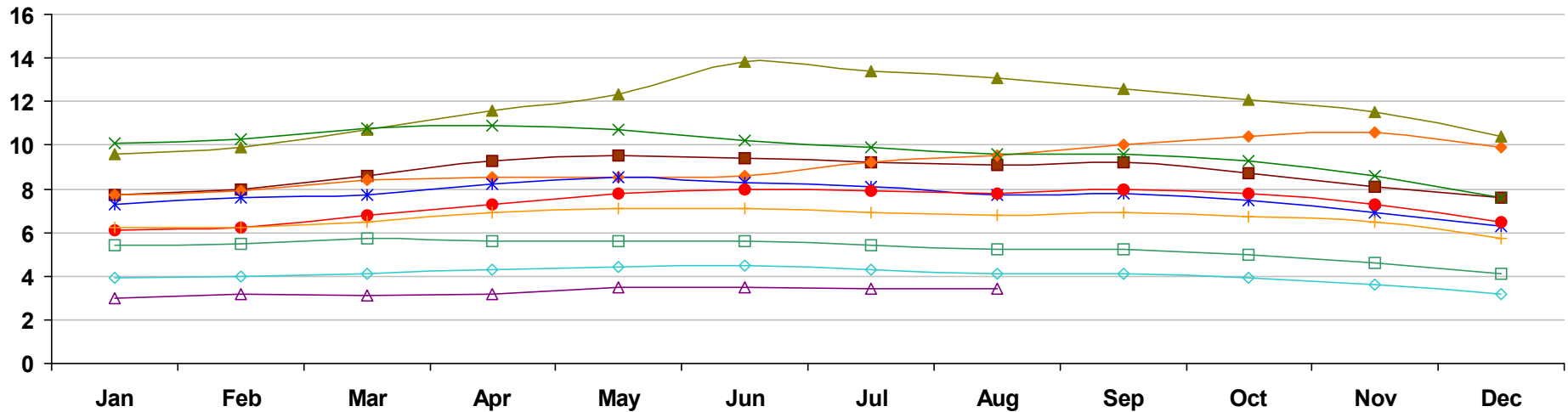
- All statistics are from TREND's monthly Residential Activity Reports. Due to the fluid nature of MLS data, insignificant statistical variations may occur with regard to sales activity between the various TREND reports.
- Mobile homes and condominiums are excluded from these statistics.
- This report includes information on listings and transactions facilitated through TREND and does not reflect the total number of listings and transactions of a given market area.
- All monetary statistics are rounded to the nearest \$10.

Delaware County, PA - Single-Family - Total Inventory



	Jan	Feb	Mar	Apr	May	Jun	Jul	Aug	Sep	Oct	Nov	Dec
2009	3,020 4.8%	3,094 5.5%	3,249 6.7%	3,418 4.9%	3,399 2.8%	3,374 0.4%	3,313 -2.0%	3,300 -1.9%	3,341 -4.0%	3,231 -5.7%	3,186 -3.5%	2,984 -4.5%
2010	3,050 1.0%	3,110 0.5%	3,330 2.5%	3,460 1.2%	3,541 4.2%	3,718 10.2%	3,779 14.1%	3,817 15.7%	3,892 16.5%	3,864 19.6%	3,741 17.4%	3,437 15.2%
2011	3,330 9.2%	3,392 9.1%	3,641 9.3%	3,828 10.6%	3,948 11.5%	4,101 10.3%	4,088 8.2%	4,049 6.1%	3,944 1.3%	3,834 -0.8%	3,664 -2.1%	3,349 -2.6%
2012	3,261 -2.1%	3,356 -1.1%	3,533 -3.0%	3,647 -4.7%	3,694 -6.4%	3,582 -12.7%	3,543 -13.3%	3,517 -13.1%	3,534 -10.4%	3,444 -10.2%	3,278 -10.5%	2,913 -13.0%
2013	2,846 -12.7%	2,982 -11.1%	3,033 -14.2%	3,237 -11.2%	3,376 -8.6%	3,381 -5.6%	3,337 -5.8%	3,203 -8.9%	3,325 -5.9%	3,224 -6.4%	2,987 -8.9%	2,716 -6.8%
2014	2,642 -7.2%	2,652 -11.1%	2,900 -4.4%	3,107 -4.0%	3,278 -2.9%	3,366 -0.4%	3,354 0.5%	3,293 2.8%	3,397 2.2%	3,292 2.1%	3,080 3.1%	2,793 2.8%
2015	2,670 1.1%	2,714 2.3%	2,875 -0.9%	3,071 -1.2%	3,205 -2.2%	3,258 -3.2%	3,230 -3.7%	3,210 -2.5%	3,255 -4.2%	3,190 -3.1%	3,061 -0.6%	2,737 -2.0%
2016	2,617 -2.0%	2,659 -2.0%	2,801 -2.6%	2,737 -10.9%	2,807 -12.4%	2,832 -13.1%	2,747 -15.0%	2,683 -16.4%	2,694 -17.2%	2,570 -19.4%	2,415 -21.1%	2,151 -21.4%
2017	2,048 -21.7%	2,097 -21.1%	2,221 -20.7%	2,323 -15.1%	2,404 -14.4%	2,427 -14.3%	2,330 -15.2%	2,239 -16.5%	2,252 -16.4%	2,141 -16.7%	1,995 -17.4%	1,764 -18.0%
2018	1,637 -20.1%	1,749 -16.6%	1,701 -23.4%	1,780 -23.4%	1,917 -20.3%	1,920 -20.9%	1,858 -20.3%	1,871 -16.4%				

Delaware County, PA - Single-Family - Inventory Accumulation

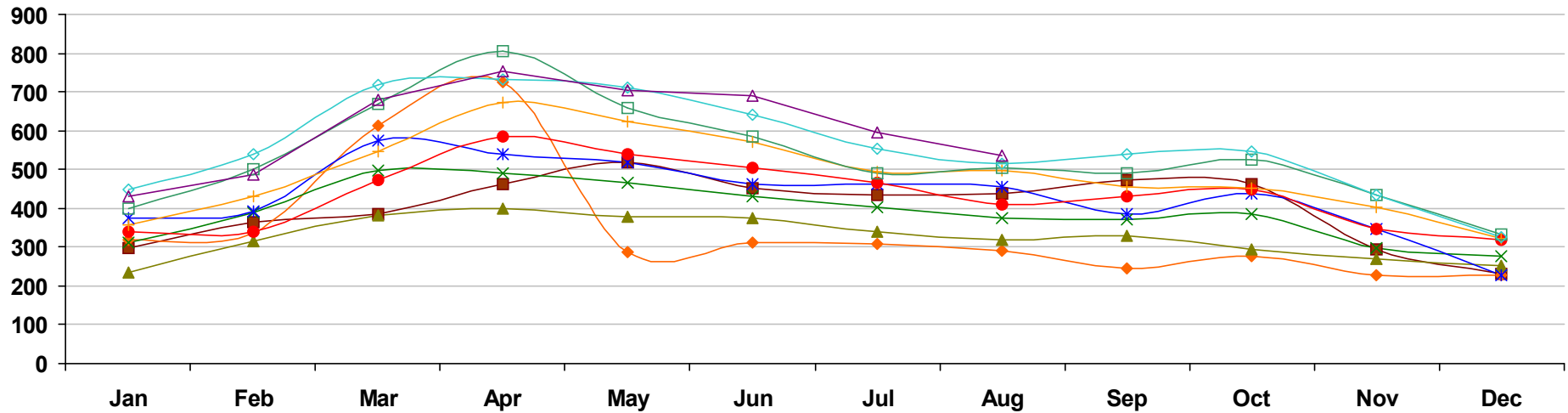


	Jan	Feb	Mar	Apr	May	Jun	Jul	Aug	Sep	Oct	Nov	Dec
■ 2009	7.7 37.5%	8.0 40.4%	8.6 41.0%	9.3 40.9%	9.5 39.7%	9.4 30.6%	9.2 22.7%	9.1 18.2%	9.2 13.6%	8.7 6.1%	8.1 -1.2%	7.6 -2.6%
◆ 2010	7.7 0.0%	7.9 -1.2%	8.4 -2.3%	8.5 -8.6%	8.5 -10.5%	8.6 -8.5%	9.2 0.0%	9.5 4.4%	10.0 8.7%	10.4 19.5%	10.6 30.9%	9.9 30.3%
▲ 2011	9.6 24.7%	9.9 25.3%	10.7 27.4%	11.6 36.5%	12.3 44.7%	13.8 60.5%	13.4 45.7%	13.1 37.9%	12.6 26.0%	12.1 16.3%	11.5 8.5%	10.4 5.1%
✕ 2012	10.1 5.2%	10.3 4.0%	10.8 0.9%	10.9 -6.0%	10.7 -13.0%	10.2 -26.1%	9.9 -26.1%	9.6 -26.7%	9.6 -23.8%	9.3 -23.1%	8.6 -25.2%	7.6 -26.9%
✱ 2013	7.3 -27.7%	7.6 -26.2%	7.7 -28.7%	8.2 -24.8%	8.5 -20.6%	8.3 -18.6%	8.1 -18.2%	7.7 -19.8%	7.8 -18.8%	7.5 -19.4%	6.9 -19.8%	6.3 -17.1%
● 2014	6.1 -16.4%	6.2 -18.4%	6.8 -11.7%	7.3 -11.0%	7.8 -8.2%	8.0 -3.6%	7.9 -2.5%	7.8 1.3%	8.0 2.6%	7.8 4.0%	7.3 5.8%	6.5 3.2%
+ 2015	6.2 1.6%	6.2 0.0%	6.5 -4.4%	6.9 -5.5%	7.1 -9.0%	7.1 -11.3%	6.9 -12.7%	6.8 -12.8%	6.9 -13.7%	6.7 -14.1%	6.5 -11.0%	5.7 -12.3%
□ 2016	5.4 -12.9%	5.5 -11.3%	5.7 -12.3%	5.6 -18.8%	5.6 -21.1%	5.6 -21.1%	5.4 -21.7%	5.2 -23.5%	5.2 -24.6%	5.0 -25.4%	4.6 -29.2%	4.1 -28.1%
◇ 2017	3.9 -27.8%	4.0 -27.3%	4.1 -28.1%	4.3 -23.2%	4.4 -21.4%	4.5 -19.6%	4.3 -20.4%	4.1 -21.2%	4.1 -21.2%	3.9 -22.0%	3.6 -21.7%	3.2 -22.0%
△ 2018	3.0 -23.1%	3.2 -20.0%	3.1 -24.4%	3.2 -25.6%	3.5 -20.5%	3.5 -22.2%	3.4 -20.9%	3.4 -17.1%				

Market History Report © 2018 TREND. Compiled 9/17/2018. Information deemed reliable, but not guaranteed. Non-members contact TREND for reprint permission.

TREND • 660 American Avenue, Suite 203 • King of Prussia, PA 19406 • 1-877-330-9900 • www.trendmls.com

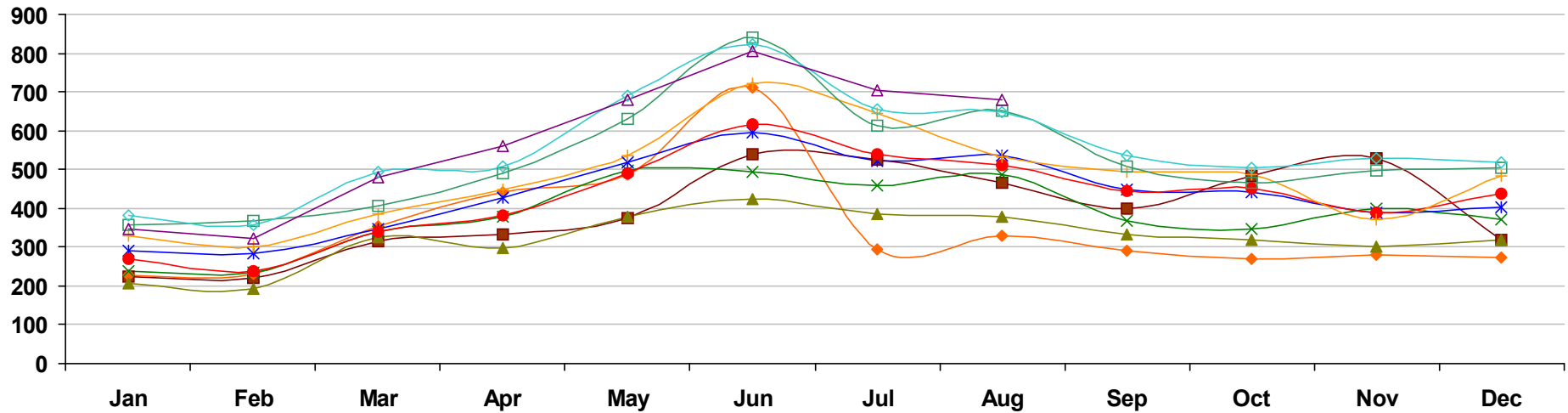
Delaware County, PA - Single-Family - Pending Units



	Jan	Feb	Mar	Apr	May	Jun	Jul	Aug	Sep	Oct	Nov	Dec
2009	299 -26.7%	364 -20.5%	385 -19.3%	463 -13.1%	518 9.5%	453 -1.9%	434 2.6%	437 21.7%	474 45.4%	464 63.4%	293 22.1%	230 -1.3%
2010	319 6.7%	337 -7.4%	614 59.5%	725 56.6%	286 -44.8%	312 -31.1%	307 -29.3%	292 -33.2%	246 -48.1%	278 -40.1%	227 -22.5%	228 -0.9%
2011	234 -26.6%	315 -6.5%	382 -37.8%	399 -45.0%	379 32.5%	376 20.5%	339 10.4%	320 9.6%	328 33.3%	294 5.8%	271 19.4%	251 10.1%
2012	312 33.3%	389 23.5%	496 29.8%	489 22.6%	466 23.0%	431 14.6%	404 19.2%	374 16.9%	372 13.4%	385 31.0%	298 10.0%	277 10.4%
2013	376 20.5%	392 0.8%	574 15.7%	539 10.2%	518 11.2%	461 7.0%	461 14.1%	454 21.4%	386 3.8%	437 13.5%	345 15.8%	226 -18.4%
2014	339 -9.8%	341 -13.0%	472 -17.8%	585 8.5%	538 3.9%	503 9.1%	465 0.9%	411 -9.5%	430 11.4%	448 2.5%	346 0.3%	318 40.7%
2015	356 5.0%	430 26.1%	548 16.1%	672 14.9%	625 16.2%	572 13.7%	495 6.5%	497 20.9%	455 5.8%	453 1.1%	402 16.2%	321 0.9%
2016	398 11.8%	502 16.7%	669 22.1%	807 20.1%	658 5.3%	584 2.1%	489 -1.2%	503 1.2%	491 7.9%	527 16.3%	434 8.0%	332 3.4%
2017	447 12.3%	538 7.2%	717 7.2%	733 -9.2%	711 8.1%	640 9.6%	552 12.9%	516 2.6%	540 10.0%	547 3.8%	433 -0.2%	324 -2.4%
2018	431 -3.6%	487 -9.5%	679 -5.3%	754 2.9%	704 -1.0%	689 7.7%	596 8.0%	535 3.7%				

Market History Report © 2018 TREND. Compiled 9/17/2018. Information deemed reliable, but not guaranteed. Non-members contact TREND for reprint permission.

Delaware County, PA - Single-Family - Settled Units

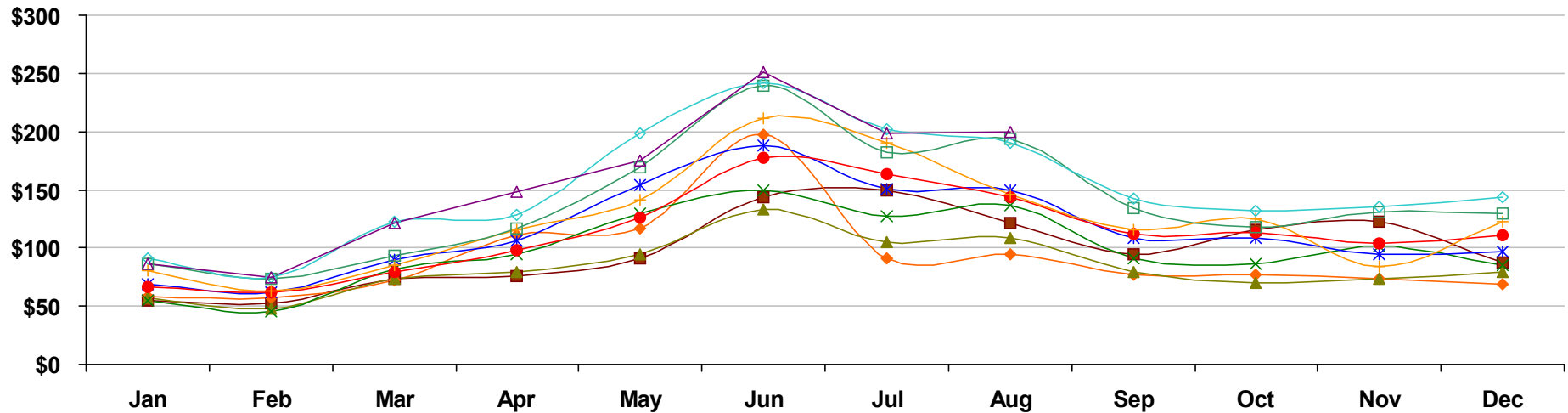


	Jan	Feb	Mar	Apr	May	Jun	Jul	Aug	Sep	Oct	Nov	Dec
■ 2009	224 -27.3%	219 -32.0%	316 -24.6%	333 -22.9%	373 -23.4%	538 -2.5%	527 11.4%	466 -2.1%	398 5.3%	485 32.9%	529 101.9%	317 -3.6%
◆ 2010	226 0.9%	232 5.9%	353 11.7%	441 32.4%	487 30.6%	710 32.0%	293 -44.4%	328 -29.6%	292 -26.6%	271 -44.1%	281 -46.9%	273 -13.9%
▲ 2011	208 -8.0%	193 -16.8%	324 -8.2%	296 -32.9%	377 -22.6%	425 -40.1%	385 31.4%	378 15.2%	331 13.4%	317 17.0%	302 7.5%	320 17.2%
× 2012	238 14.4%	235 21.8%	339 4.6%	379 28.0%	497 31.8%	495 16.5%	458 19.0%	487 28.8%	366 10.6%	348 9.8%	399 32.1%	370 15.6%
✱ 2013	290 21.8%	282 20.0%	345 1.8%	428 12.9%	519 4.4%	596 20.4%	521 13.8%	537 10.3%	449 22.7%	440 26.4%	388 -2.8%	403 8.9%
● 2014	269 -7.2%	238 -15.6%	341 -1.2%	383 -10.5%	490 -5.6%	618 3.7%	539 3.5%	513 -4.5%	446 -0.7%	453 3.0%	390 0.5%	437 8.4%
+ 2015	329 22.3%	302 26.9%	384 12.6%	450 17.5%	536 9.4%	723 17.0%	645 19.7%	533 3.9%	494 10.8%	488 7.7%	371 -4.9%	484 10.8%
□ 2016	357 8.5%	366 21.2%	405 5.5%	490 8.9%	631 17.7%	840 16.2%	614 -4.8%	650 22.0%	507 2.6%	467 -4.3%	497 34.0%	506 4.5%
◇ 2017	382 7.0%	357 -2.5%	494 22.0%	508 3.7%	691 9.5%	822 -2.1%	655 6.7%	647 -0.5%	535 5.5%	506 8.4%	530 6.6%	518 2.4%
△ 2018	347 -9.2%	323 -9.5%	481 -2.6%	562 10.6%	680 -1.6%	806 -1.9%	704 7.5%	678 4.8%				

Market History Report © 2018 TREND. Compiled 9/17/2018. Information deemed reliable, but not guaranteed. Non-members contact TREND for reprint permission.

TREND • 660 American Avenue, Suite 203 • King of Prussia, PA 19406 • 1-877-330-9900 • www.trendmls.com

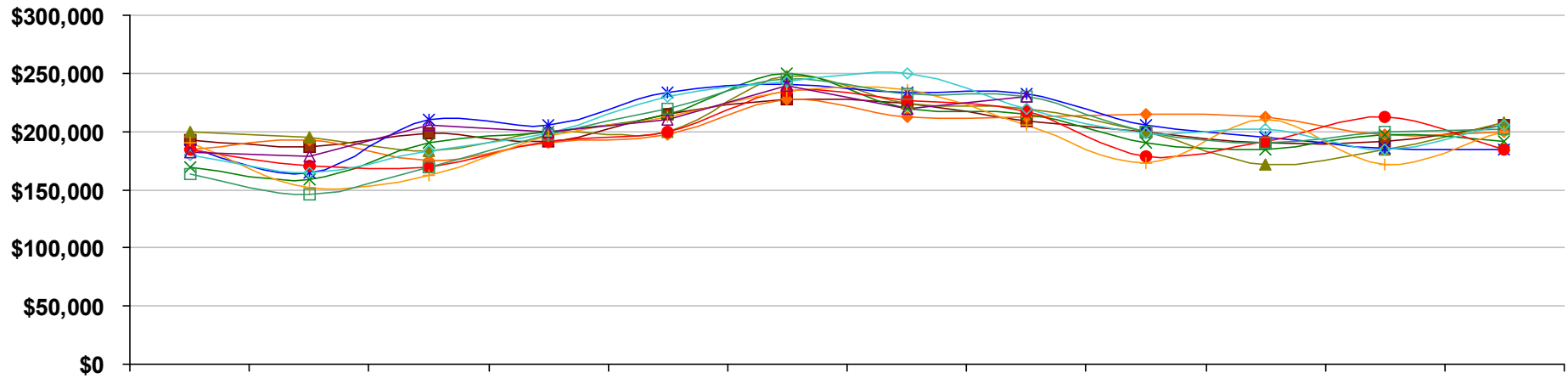
Delaware County, PA - Single-Family - Total Settled Volume



	Jan	Feb	Mar	Apr	May	Jun	Jul	Aug	Sep	Oct	Nov	Dec
■ 2009	\$55 -35.4%	\$52 -37.7%	\$74 -22.7%	\$76 -31.2%	\$91 -27.2%	\$144 -11.4%	\$150 4.3%	\$121 -13.8%	\$95 -4.5%	\$115 25.6%	\$123 89.0%	\$87 10.6%
◆ 2010	\$58 5.0%	\$57 9.7%	\$72 -3.7%	\$111 45.6%	\$117 29.3%	\$197 37.0%	\$91 -39.2%	\$95 -22.0%	\$77 -18.8%	\$77 -32.6%	\$74 -40.1%	\$69 -20.9%
▲ 2011	\$57 -1.5%	\$48 -15.9%	\$74 3.1%	\$79 -29.3%	\$94 -20.2%	\$133 -32.4%	\$105 15.2%	\$109 15.2%	\$79 2.5%	\$70 -10.0%	\$73 -1.3%	\$79 15.3%
✕ 2012	\$55 -2.6%	\$46 -4.1%	\$82 11.6%	\$94 19.1%	\$130 38.5%	\$149 11.7%	\$127 21.4%	\$136 25.0%	\$91 16.0%	\$86 23.0%	\$101 38.3%	\$85 7.6%
✱ 2013	\$69 25.3%	\$62 34.1%	\$90 9.8%	\$106 13.5%	\$154 18.5%	\$188 26.5%	\$151 18.5%	\$149 9.3%	\$109 19.7%	\$109 27.1%	\$95 -5.9%	\$97 13.9%
● 2014	\$66 -5.4%	\$62 0.1%	\$79 -12.9%	\$98 -7.9%	\$126 -18.3%	\$177 -6.1%	\$164 9.1%	\$144 -3.0%	\$112 2.0%	\$113 4.2%	\$104 9.1%	\$111 14.4%
+ 2015	\$81 22.6%	\$63 1.8%	\$85 8.6%	\$115 17.6%	\$141 12.3%	\$211 19.2%	\$190 15.3%	\$146 1.2%	\$115 2.6%	\$125 9.9%	\$84 -19.0%	\$123 10.6%
□ 2016	\$86 6.2%	\$73 14.6%	\$93 8.4%	\$117 2.2%	\$169 19.6%	\$239 13.2%	\$182 -3.8%	\$194 32.8%	\$134 16.7%	\$118 -5.2%	\$131 55.7%	\$129 5.0%
◇ 2017	\$91 6.7%	\$75 3.8%	\$123 33.0%	\$128 8.7%	\$198 17.5%	\$242 1.4%	\$202 10.6%	\$190 -2.3%	\$142 6.3%	\$132 12.0%	\$135 3.4%	\$143 11.0%
△ 2018	\$86 -6.2%	\$75 -0.6%	\$121 -1.5%	\$148 16.2%	\$175 -11.7%	\$251 3.8%	\$198 -1.7%	\$200 5.7%				

Values on this report are displayed in Millions

Delaware County, PA - Single-Family - Median Settled Price

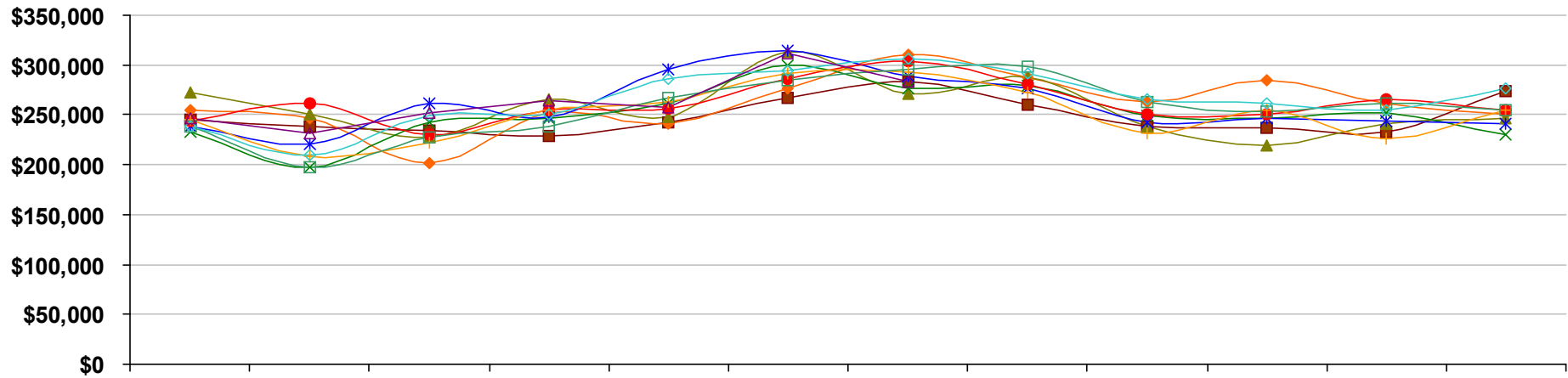


	Jan	Feb	Mar	Apr	May	Jun	Jul	Aug	Sep	Oct	Nov	Dec
2009	\$193,000 4.3%	\$187,000 -6.5%	\$198,000 -1.0%	\$192,000 -6.8%	\$215,000 3.4%	\$228,000 -0.9%	\$224,000 -6.7%	\$209,000 -11.1%	\$200,000 -7.0%	\$190,000 -9.5%	\$191,000 0.5%	\$205,000 5.1%
2010	\$185,000 -4.1%	\$193,000 3.2%	\$175,000 -11.6%	\$190,000 -1.0%	\$197,000 -8.4%	\$228,000 0.0%	\$212,000 -5.4%	\$213,000 1.9%	\$215,000 7.5%	\$212,000 11.6%	\$197,000 3.1%	\$200,000 -2.4%
2011	\$200,000 8.1%	\$195,000 1.0%	\$183,000 4.6%	\$200,000 5.3%	\$200,000 1.5%	\$248,000 8.8%	\$224,000 5.7%	\$220,000 3.3%	\$200,000 -7.0%	\$172,000 -18.9%	\$185,000 -6.1%	\$208,000 4.0%
2012	\$169,000 -15.5%	\$159,000 -18.5%	\$190,000 3.8%	\$200,000 0.0%	\$215,000 7.5%	\$250,000 0.8%	\$219,000 -2.2%	\$215,000 -2.3%	\$190,000 -5.0%	\$185,000 7.6%	\$197,000 6.5%	\$192,000 -7.7%
2013	\$185,000 9.5%	\$165,000 3.8%	\$210,000 10.5%	\$205,000 2.5%	\$233,000 8.4%	\$240,000 -4.0%	\$234,000 6.8%	\$232,000 7.9%	\$206,000 8.4%	\$195,000 5.4%	\$186,000 -5.6%	\$185,000 -3.6%
2014	\$185,000 0.0%	\$170,000 3.0%	\$169,000 -19.5%	\$191,000 -6.8%	\$200,000 -14.2%	\$235,000 -2.1%	\$227,000 -3.0%	\$217,000 -6.5%	\$179,000 -13.1%	\$192,000 -1.5%	\$213,000 14.5%	\$184,000 -0.5%
2015	\$190,000 2.7%	\$152,000 -10.6%	\$162,000 -4.1%	\$196,000 2.6%	\$212,000 6.0%	\$235,000 0.0%	\$236,000 4.0%	\$205,000 -5.5%	\$173,000 -3.4%	\$210,000 9.4%	\$172,000 -19.2%	\$200,000 8.7%
2016	\$164,000 -13.7%	\$146,000 -3.9%	\$169,000 4.3%	\$197,000 0.5%	\$220,000 3.8%	\$245,000 4.3%	\$232,000 -1.7%	\$230,000 12.2%	\$200,000 15.6%	\$190,000 -9.5%	\$200,000 16.3%	\$202,000 1.0%
2017	\$180,000 9.8%	\$165,000 13.0%	\$183,000 8.3%	\$199,000 1.0%	\$230,000 4.5%	\$243,000 -0.8%	\$250,000 7.8%	\$220,000 -4.3%	\$199,000 -0.5%	\$202,000 6.3%	\$185,000 -7.5%	\$205,000 1.5%
2018	\$182,000 1.1%	\$179,000 8.5%	\$206,000 12.6%	\$200,000 0.5%	\$210,000 -8.7%	\$239,000 -1.6%	\$220,000 -12.0%	\$230,000 4.5%				

Market History Report © 2018 TREND. Compiled 9/17/2018. Information deemed reliable, but not guaranteed. Non-members contact TREND for reprint permission.

TREND • 660 American Avenue, Suite 203 • King of Prussia, PA 19406 • 1-877-330-9900 • www.trendmls.com

Delaware County, PA - Single-Family - Average Settled Price

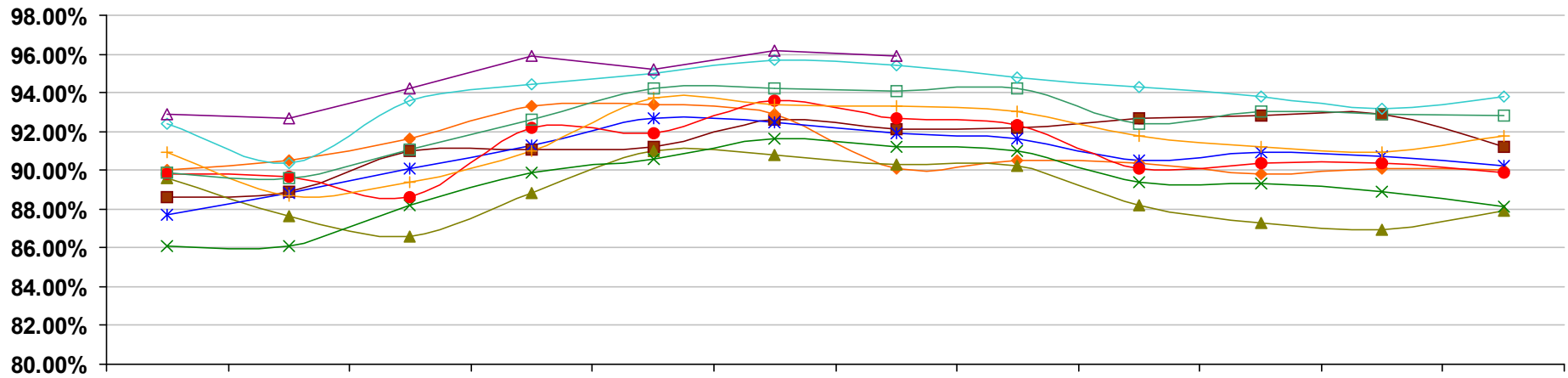


	Jan	Feb	Mar	Apr	May	Jun	Jul	Aug	Sep	Oct	Nov	Dec
■ 2009	\$245,000 -11.2%	\$239,000 -8.4%	\$234,000 2.2%	\$229,000 -10.5%	\$243,000 -5.1%	\$267,000 -9.2%	\$283,000 -6.6%	\$260,000 -11.9%	\$238,000 -9.2%	\$237,000 -5.2%	\$233,000 -6.4%	\$274,000 15.1%
◆ 2010	\$255,000 4.1%	\$247,000 3.3%	\$202,000 -13.7%	\$252,000 10.0%	\$241,000 -0.8%	\$277,000 3.7%	\$310,000 9.5%	\$288,000 10.8%	\$263,000 10.5%	\$285,000 20.3%	\$262,000 12.4%	\$251,000 -8.4%
▲ 2011	\$273,000 7.1%	\$250,000 1.2%	\$227,000 12.4%	\$265,000 5.2%	\$248,000 2.9%	\$313,000 13.0%	\$271,000 -12.6%	\$288,000 0.0%	\$238,000 -9.5%	\$219,000 -23.2%	\$241,000 -8.0%	\$247,000 -1.6%
✕ 2012	\$233,000 -14.7%	\$197,000 -21.2%	\$242,000 6.6%	\$246,000 -7.2%	\$261,000 5.2%	\$300,000 -4.2%	\$277,000 2.2%	\$279,000 -3.1%	\$249,000 4.6%	\$246,000 12.3%	\$252,000 4.6%	\$230,000 -6.9%
✱ 2013	\$239,000 2.6%	\$220,000 11.7%	\$261,000 7.9%	\$248,000 0.8%	\$296,000 13.4%	\$315,000 5.0%	\$289,000 4.3%	\$277,000 -0.7%	\$243,000 -2.4%	\$247,000 0.4%	\$244,000 -3.2%	\$241,000 4.8%
● 2014	\$244,000 2.1%	\$261,000 18.6%	\$230,000 -11.9%	\$255,000 2.8%	\$256,000 -13.5%	\$286,000 -9.2%	\$304,000 5.2%	\$281,000 1.4%	\$250,000 2.9%	\$250,000 1.2%	\$265,000 8.6%	\$254,000 5.4%
✚ 2015	\$245,000 0.4%	\$209,000 -19.9%	\$222,000 -3.5%	\$255,000 0.0%	\$263,000 2.7%	\$291,000 1.7%	\$293,000 -3.6%	\$273,000 -2.8%	\$231,000 -7.6%	\$255,000 2.0%	\$226,000 -14.7%	\$254,000 0.0%
▣ 2016	\$239,000 -2.4%	\$198,000 -5.3%	\$228,000 2.7%	\$239,000 -6.3%	\$267,000 1.5%	\$284,000 -2.4%	\$296,000 1.0%	\$298,000 9.2%	\$263,000 13.9%	\$253,000 -0.8%	\$262,000 15.9%	\$255,000 0.4%
◇ 2017	\$239,000 0.0%	\$210,000 6.1%	\$249,000 9.2%	\$251,000 5.0%	\$286,000 7.1%	\$294,000 3.5%	\$307,000 3.7%	\$292,000 -2.0%	\$265,000 0.8%	\$261,000 3.2%	\$255,000 -2.7%	\$276,000 8.2%
△ 2018	\$246,000 2.9%	\$231,000 10.0%	\$252,000 1.2%	\$264,000 5.2%	\$258,000 -9.8%	\$312,000 6.1%	\$283,000 -7.8%					

Market History Report © 2018 TREND. Compiled 9/17/2018. Information deemed reliable, but not guaranteed. Non-members contact TREND for reprint permission.

TREND • 660 American Avenue, Suite 203 • King of Prussia, PA 19406 • 1-877-330-9900 • www.trendmls.com

Delaware County, PA - Single-Family - Average Settled Price/Original Price



	Jan	Feb	Mar	Apr	May	Jun	Jul	Aug	Sep	Oct	Nov	Dec
■ 2009	88.6% -4.4%	88.9% -4.4%	91.0% -1.8%	91.1% -2.3%	91.2% -3.2%	92.6% -1.8%	92.1% -2.4%	92.2% -1.8%	92.7% -0.6%	92.8% 0.6%	92.9% 1.9%	91.2% -0.6%
◆ 2010	90.0% 1.6%	90.5% 1.8%	91.6% 0.7%	93.3% 2.5%	93.4% 2.4%	92.9% 0.2%	90.1% -2.3%	90.5% -1.9%	90.4% -2.5%	89.8% -3.2%	90.1% -3.1%	90.0% -1.3%
▲ 2011	89.6% -0.5%	87.6% -3.2%	86.6% -5.5%	88.8% -4.9%	91.0% -2.5%	90.8% -2.2%	90.3% 0.3%	90.2% -0.4%	88.2% -2.4%	87.3% -2.8%	86.9% -3.6%	87.9% -2.4%
× 2012	86.1% -3.8%	86.1% -1.7%	88.2% 1.8%	89.9% 1.3%	90.6% -0.4%	91.6% 0.9%	91.2% 0.9%	91.0% 0.9%	89.4% 1.4%	89.3% 2.3%	88.9% 2.3%	88.1% 0.3%
✱ 2013	87.7% 1.8%	88.8% 3.1%	90.1% 2.2%	91.3% 1.6%	92.7% 2.2%	92.5% 0.9%	91.9% 0.8%	91.6% 0.6%	90.5% 1.2%	90.9% 1.8%	90.7% 2.0%	90.2% 2.3%
● 2014	89.8% 2.4%	89.7% 1.0%	88.6% -1.7%	92.2% 0.9%	91.9% -0.8%	93.6% 1.2%	92.7% 0.8%	92.3% 0.8%	90.1% -0.4%	90.4% -0.6%	90.4% -0.3%	89.9% -0.3%
+ 2015	90.9% 1.2%	88.7% -1.0%	89.4% 1.0%	91.0% -1.2%	93.7% 2.0%	93.4% -0.1%	93.3% 0.6%	93.0% 0.8%	91.8% 1.9%	91.2% 0.9%	90.9% 0.6%	91.8% 2.1%
□ 2016	89.9% -1.2%	89.6% 0.9%	91.1% 1.9%	92.6% 1.7%	94.2% 0.4%	94.2% 0.8%	94.1% 0.9%	94.2% 1.2%	92.4% 0.6%	93.0% 1.9%	92.9% 2.2%	92.8% 1.1%
◇ 2017	92.4% 2.8%	90.4% 0.9%	93.6% 2.8%	94.4% 2.0%	95.0% 0.9%	95.7% 1.6%	95.4% 1.4%	94.8% 0.7%	94.3% 2.1%	93.8% 0.8%	93.2% 0.3%	93.8% 1.0%
△ 2018	92.9% 0.6%	92.7% 2.6%	94.2% 0.6%	95.9% 1.6%	95.2% 0.2%	96.2% 0.5%	95.9% 0.5%					

Market History Report © 2018 TREND. Compiled 9/17/2018. Information deemed reliable, but not guaranteed. Non-members contact TREND for reprint permission.

TREND • 660 American Avenue, Suite 203 • King of Prussia, PA 19406 • 1-877-330-9900 • www.trendmls.com