

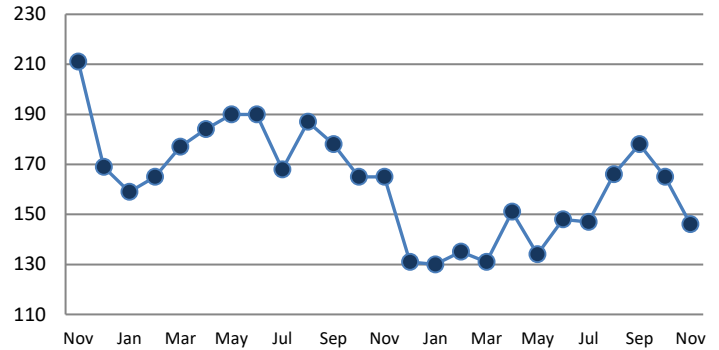
**PENDING**

Price Range	New This Month			Year-To-Date		
	2016	2017	% Change	2016	2017	% Change
0 - 149,999	33	22	-33.3%	454	364	-19.8%
150,000 - 199,999	33	35	6.1%	497	508	2.2%
200,000 - 299,999	104	139	33.7%	1702	1701	-0.1%
300,000 - 399,999	94	97	3.2%	1425	1436	0.8%
400,000 - 499,999	66	87	31.8%	917	1133	23.6%
500,000 - 599,999	28	37	32.1%	549	565	2.9%
600,000 - 699,999	21	21	0.0%	305	368	20.7%
700,000 - 799,999	15	8	-46.7%	166	197	18.7%
800,000 - 899,999	9	3	-66.7%	87	101	16.1%
900,000 - 999,999	3	2	-33.3%	41	75	82.9%
1,000,000 - 1,999,999	9	8	-11.1%	107	126	17.8%
2,000,000 +	1	0	-100.0%	8	11	37.5%
<b>TOTALS</b>	<b>416</b>	<b>459</b>	<b>10.3%</b>	<b>6258</b>	<b>6585</b>	<b>5.2%</b>

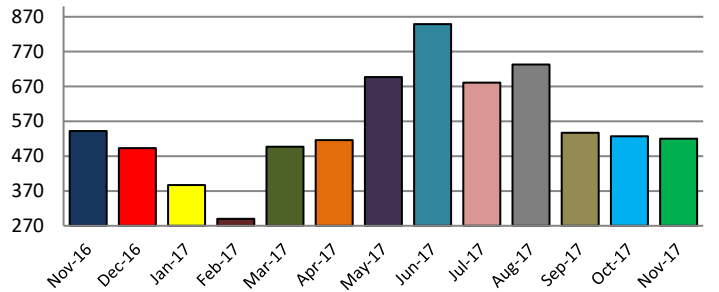
**SETTLEMENTS**

Price Range	New This Month			Year-To-Date		
	2016	2017	% Change	2016	2017	% Change
0 - 149,999	36	23	-36.1%	437	355	-18.8%
150,000 - 199,999	43	46	7.0%	495	503	1.6%
200,000 - 299,999	154	136	-11.7%	1679	1566	-6.7%
300,000 - 399,999	122	114	-6.6%	1375	1353	-1.6%
400,000 - 499,999	81	85	4.9%	853	1041	22.0%
500,000 - 599,999	47	49	4.3%	511	570	11.5%
600,000 - 699,999	28	34	21.4%	288	371	28.8%
700,000 - 799,999	14	15	7.1%	148	181	22.3%
800,000 - 899,999	5	7	40.0%	86	104	20.9%
900,000 - 999,999	4	3	-25.0%	38	65	71.1%
1,000,000 - 1,999,999	6	7	16.7%	115	117	1.7%
2,000,000 +	2	1	-50.0%	9	8	-11.1%
<b>TOTALS</b>	<b>542</b>	<b>520</b>	<b>-4.1%</b>	<b>6034</b>	<b>6234</b>	<b>3.3%</b>

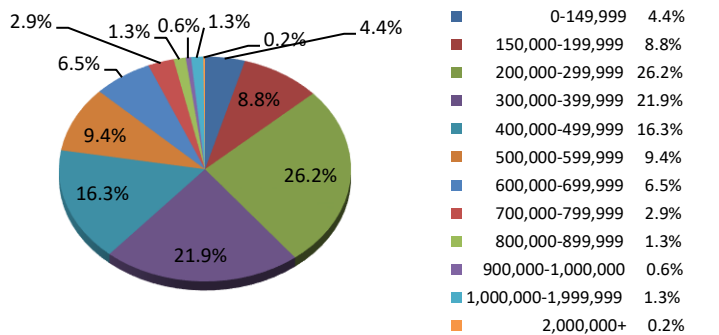
**INVENTORY TREND**  
Listings Active at End of Month



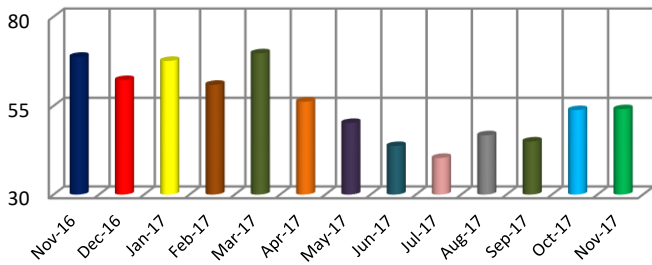
**SALES TREND**  
Settlements Per Month



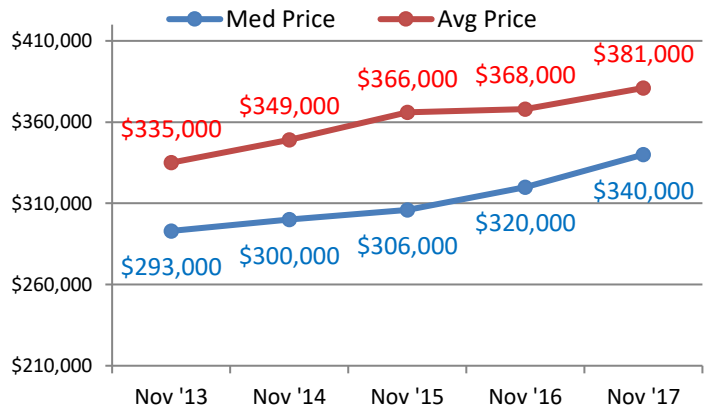
**SETTLEMENTS BY PRICE RANGE**



**AVERAGE DAYS ON MARKET**



**AVERAGE & MEDIAN PRICE**



DATA SOURCE: Trend Multiple Listing Service

NOTES: Properties not listed through this MLS are not reflected. The term "sales" represents ratified purchase contracts. Current year information is preliminary and subject to revision. Current year-to-date contract information may not equal the sum of the monthly contract totals reported above