

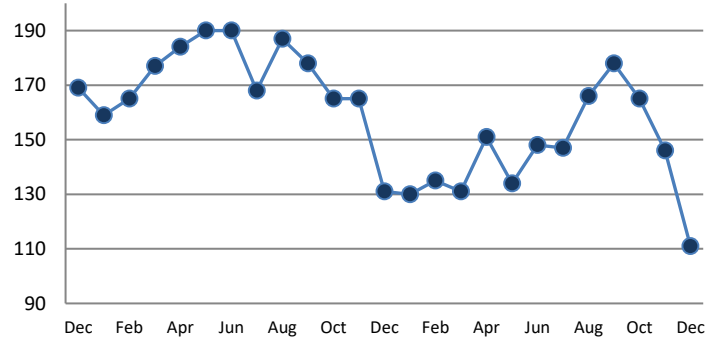
**PENDING**

Price Range	New This Month			Year-To-Date		
	2016	2017	% Change	2016	2017	% Change
0 - 149,999	33	23	-30.3%	488	395	-19.1%
150,000 - 199,999	44	41	-6.8%	542	552	1.8%
200,000 - 299,999	87	88	1.1%	1795	1784	-0.6%
300,000 - 399,999	68	66	-2.9%	1498	1509	0.7%
400,000 - 499,999	38	49	28.9%	956	1183	23.7%
500,000 - 599,999	36	20	-44.4%	585	587	0.3%
600,000 - 699,999	27	18	-33.3%	334	383	14.7%
700,000 - 799,999	6	5	-16.7%	172	197	14.5%
800,000 - 899,999	11	5	-54.5%	98	109	11.2%
900,000 - 999,999	1	3	200.0%	42	79	88.1%
1,000,000 - 1,999,999	5	6	20.0%	112	131	17.0%
2,000,000 +	0	0	--	8	12	50.0%
<b>TOTALS</b>	<b>356</b>	<b>324</b>	<b>-9.0%</b>	<b>6630</b>	<b>6921</b>	<b>4.4%</b>

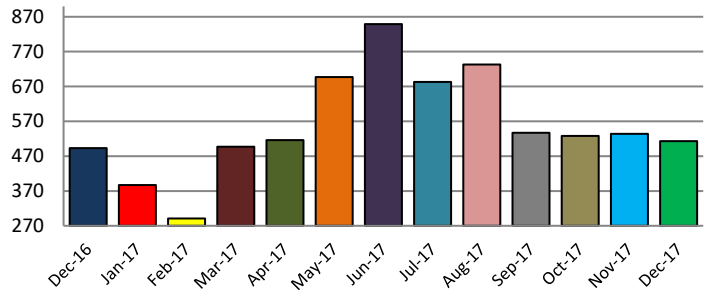
**SETTLEMENTS**

Price Range	New This Month			Year-To-Date		
	2016	2017	% Change	2016	2017	% Change
0 - 149,999	44	31	-29.5%	481	386	-19.8%
150,000 - 199,999	43	47	9.3%	538	552	2.6%
200,000 - 299,999	123	139	13.0%	1802	1711	-5.0%
300,000 - 399,999	111	113	1.8%	1486	1467	-1.3%
400,000 - 499,999	85	93	9.4%	938	1138	21.3%
500,000 - 599,999	36	35	-2.8%	547	607	11.0%
600,000 - 699,999	17	23	35.3%	305	394	29.2%
700,000 - 799,999	17	8	-52.9%	165	190	15.2%
800,000 - 899,999	7	8	14.3%	93	114	22.6%
900,000 - 999,999	2	3	50.0%	40	68	70.0%
1,000,000 - 1,999,999	8	10	25.0%	123	127	3.3%
2,000,000 +	0	3	--	9	11	22.2%
<b>TOTALS</b>	<b>493</b>	<b>513</b>	<b>4.1%</b>	<b>6527</b>	<b>6765</b>	<b>3.6%</b>

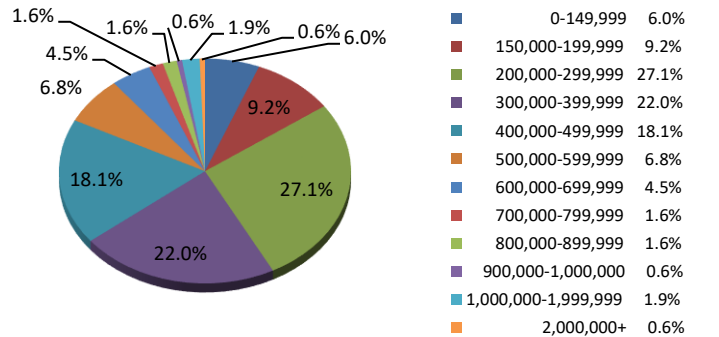
**INVENTORY TREND**  
Listings Active at End of Month



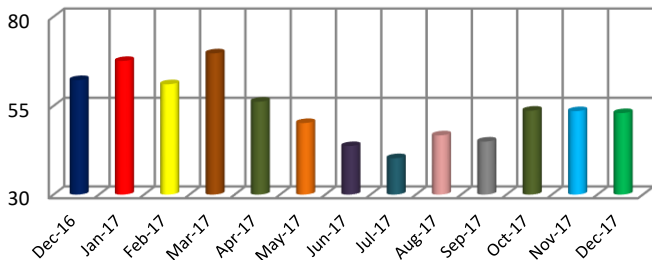
**SALES TREND**  
Settlements Per Month



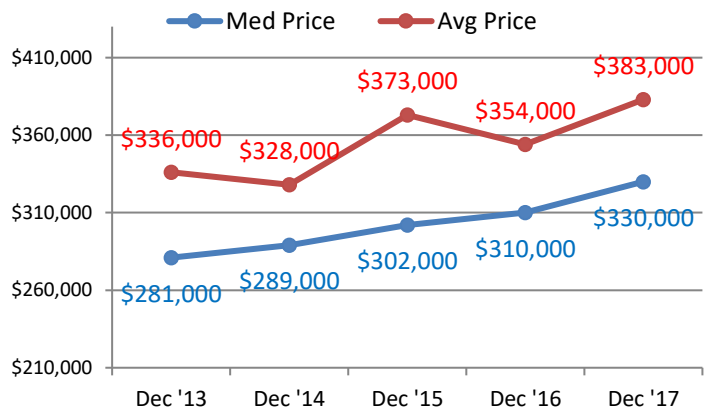
**SETTLEMENTS BY PRICE RANGE**



**AVERAGE DAYS ON MARKET**



**AVERAGE & MEDIAN PRICE**



DATA SOURCE: Trend Multiple Listing Service

NOTES: Properties not listed through this MLS are not reflected. The term "sales" represents ratified purchase contracts. Current year information is preliminary and subject to revision. Current year-to-date contract information may not equal the sum of the monthly contract totals reported above