

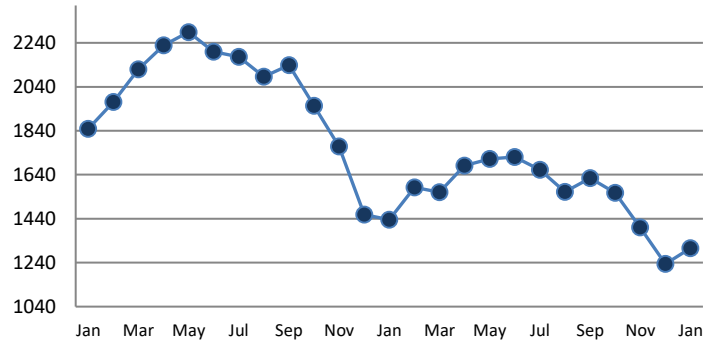
PENDING

Price Range	New This Month			Year-To-Date		
	2018	2019	% Change	2018	2019	% Change
0 - 149,999	160	148	-7.5%	160	148	-7.5%
150,000 - 199,999	56	62	10.7%	56	62	10.7%
200,000 - 299,999	86	93	8.1%	86	93	8.1%
300,000 - 399,999	54	56	3.7%	54	56	3.7%
400,000 - 499,999	29	22	-24.1%	29	22	-24.1%
500,000 - 599,999	15	18	20.0%	15	18	20.0%
600,000 - 699,999	13	16	23.1%	13	16	23.1%
700,000 - 799,999	6	4	-33.3%	6	4	-33.3%
800,000 - 899,999	3	6	100.0%	3	6	100.0%
900,000 - 999,999	2	5	150.0%	2	5	150.0%
1,000,000 - 1,999,999	1	5	400.0%	1	5	400.0%
2,000,000 +	1	1	0.0%	1	1	0.0%
TOTALS	426	436	2.3%	426	436	2.3%

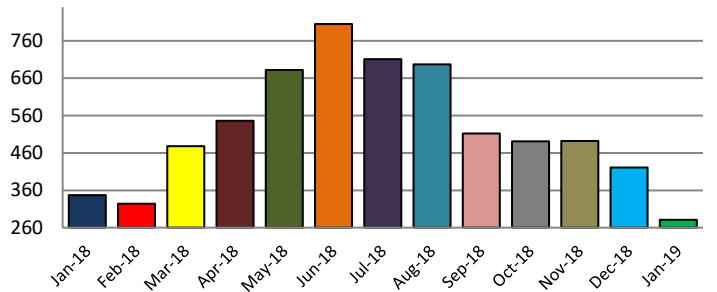
SETTLEMENTS

Price Range	New This Month			Year-To-Date		
	2018	2019	% Change	2018	2019	% Change
0 - 149,999	133	96	-27.8%	133	96	-27.8%
150,000 - 199,999	53	44	-17.0%	53	44	-17.0%
200,000 - 299,999	55	54	-1.8%	55	54	-1.8%
300,000 - 399,999	45	46	2.2%	45	46	2.2%
400,000 - 499,999	31	15	-51.6%	31	15	-51.6%
500,000 - 599,999	10	10	0.0%	10	10	0.0%
600,000 - 699,999	10	5	-50.0%	10	5	-50.0%
700,000 - 799,999	1	0	-100.0%	1	0	-100.0%
800,000 - 899,999	2	3	50.0%	2	3	50.0%
900,000 - 999,999	6	0	-100.0%	6	0	-100.0%
1,000,000 - 1,999,999	1	6	500.0%	1	6	500.0%
2,000,000 +	0	2	--	0	2	--
TOTALS	347	281	-19.0%	347	281	-19.0%

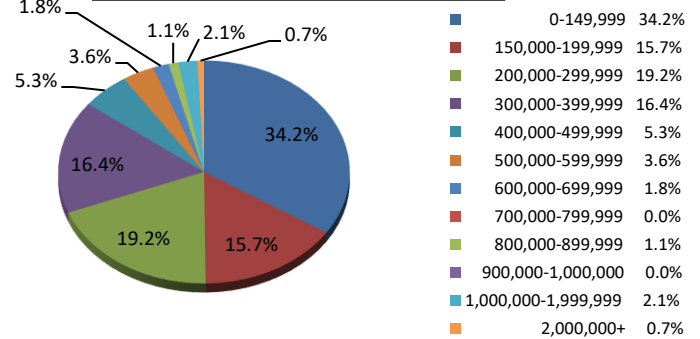
INVENTORY TREND
Listings Active at End of Month



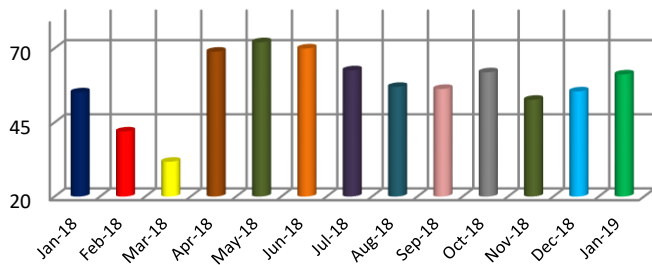
SALES TREND
Settlements Per Month



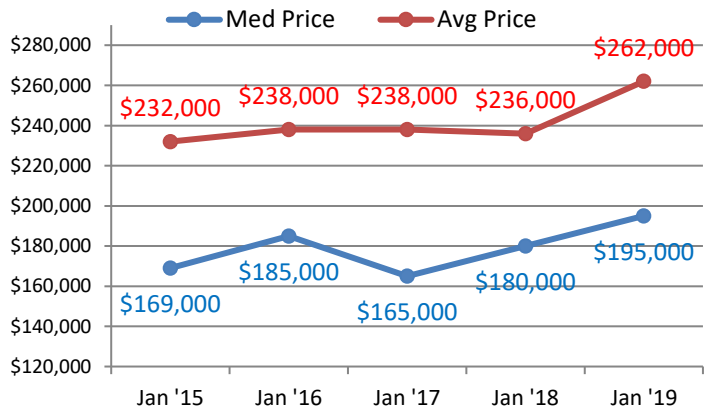
SETTLEMENTS BY PRICE RANGE



AVERAGE DAYS ON MARKET



AVERAGE & MEDIAN PRICE



DATA SOURCE: Trend Multiple Listing Service

NOTES: Properties not listed through this MLS are not reflected. The term "sales" represents ratified purchase contracts. Current year information is preliminary and subject to revision. Current year-to-date contract information may not equal the sum of the monthly contract totals reported above