

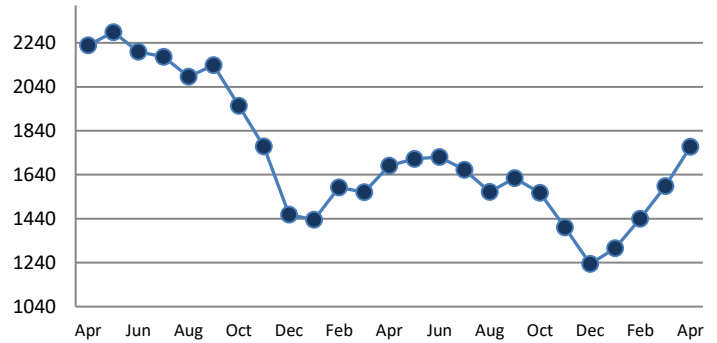
PENDING

Price Range	New This Month			Year-To-Date		
	2018	2019	% Change	2018	2019	% Change
0 - 149,999	211	218	3.3%	768	709	-7.7%
150,000 - 199,999	111	117	5.4%	314	332	5.7%
200,000 - 299,999	162	164	1.2%	472	509	7.8%
300,000 - 399,999	101	129	27.7%	330	373	13.0%
400,000 - 499,999	56	74	32.1%	176	184	4.5%
500,000 - 599,999	36	44	22.2%	100	106	6.0%
600,000 - 699,999	18	29	61.1%	58	94	62.1%
700,000 - 799,999	12	17	41.7%	37	38	2.7%
800,000 - 899,999	15	13	-13.3%	27	33	22.2%
900,000 - 999,999	8	3	-62.5%	14	15	7.1%
1,000,000 - 1,999,999	14	23	64.3%	24	49	104.2%
2,000,000 +	2	1	-50.0%	3	6	100.0%
TOTALS	746	832	11.5%	2323	2448	5.4%

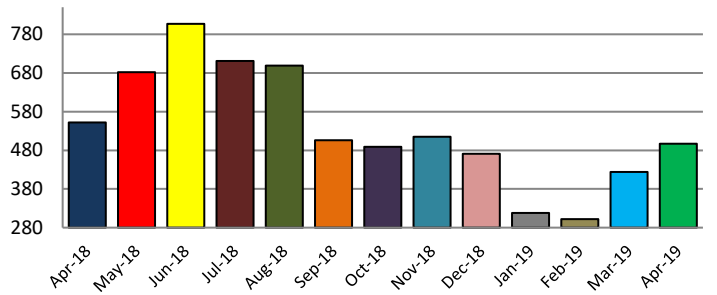
SETTLEMENTS

Price Range	New This Month			Year-To-Date		
	2018	2019	% Change	2018	2019	% Change
0 - 149,999	194	133	-31.4%	633	494	-22.0%
150,000 - 199,999	75	66	-12.0%	231	217	-6.1%
200,000 - 299,999	109	110	0.9%	323	313	-3.1%
300,000 - 399,999	78	75	-3.8%	226	231	2.2%
400,000 - 499,999	42	42	0.0%	119	101	-15.1%
500,000 - 599,999	19	23	21.1%	65	68	4.6%
600,000 - 699,999	15	19	26.7%	49	48	-2.0%
700,000 - 799,999	6	11	83.3%	23	21	-8.7%
800,000 - 899,999	2	9	350.0%	9	17	88.9%
900,000 - 999,999	2	3	50.0%	10	11	10.0%
1,000,000 - 1,999,999	9	4	-55.6%	13	14	7.7%
2,000,000 +	1	2	100.0%	1	6	500.0%
TOTALS	552	497	-10.0%	1702	1541	-9.5%

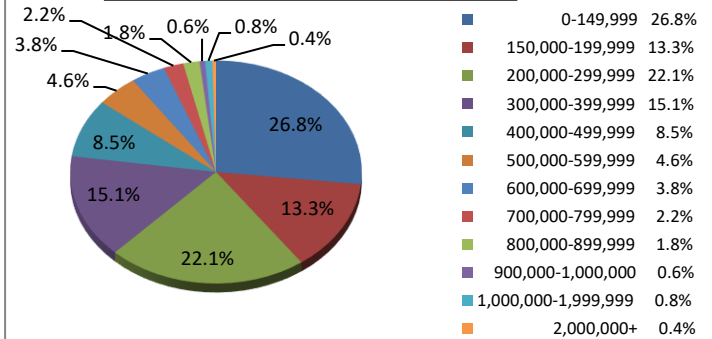
INVENTORY TREND
Listings Active at End of Month



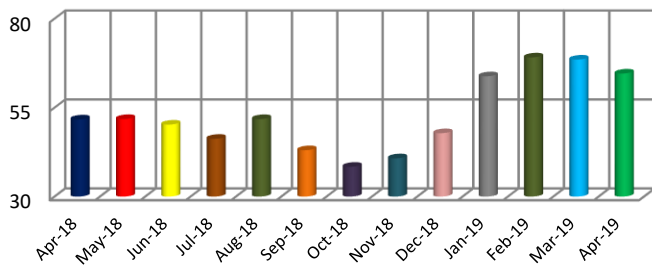
SALES TREND
Settlements Per Month



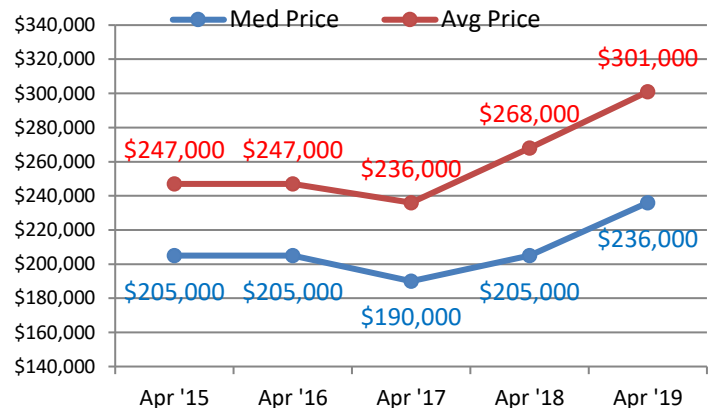
SETTLEMENTS BY PRICE RANGE



AVERAGE DAYS ON MARKET



AVERAGE & MEDIAN PRICE



DATA SOURCE: Trend Multiple Listing Service

NOTES: Properties not listed through this MLS are not reflected. The term "sales" represents ratified purchase contracts. Current year information is preliminary and subject to revision. Current year-to-date contract information may not equal the sum of the monthly contract totals reported above