

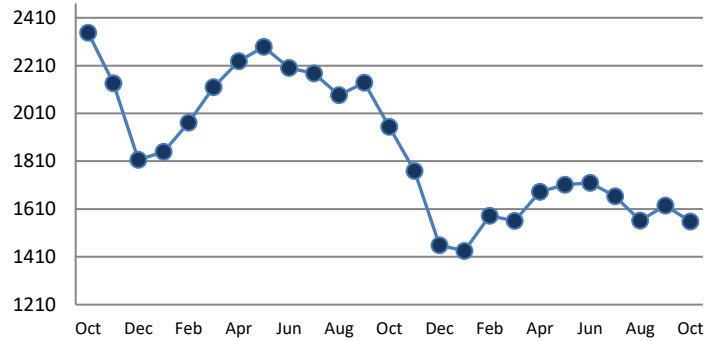
**PENDING**

Price Range	New This Month			Year-To-Date		
	2017	2018	% Change	2017	2018	% Change
0 - 149,999	205	191	-6.8%	1990	1941	-2.5%
150,000 - 199,999	59	70	18.6%	729	795	9.1%
200,000 - 299,999	102	111	8.8%	1120	1155	3.1%
300,000 - 399,999	79	66	-16.5%	859	818	-4.8%
400,000 - 499,999	38	32	-15.8%	444	418	-5.9%
500,000 - 599,999	17	14	-17.6%	236	244	3.4%
600,000 - 699,999	22	10	-54.5%	172	170	-1.2%
700,000 - 799,999	8	8	0.0%	122	96	-21.3%
800,000 - 899,999	3	4	33.3%	61	64	4.9%
900,000 - 999,999	4	4	0.0%	25	25	0.0%
1,000,000 - 1,999,999	7	15	114.3%	85	91	7.1%
2,000,000 +	2	1	-50.0%	14	16	14.3%
<b>TOTALS</b>	<b>546</b>	<b>526</b>	<b>-3.7%</b>	<b>5857</b>	<b>5833</b>	<b>-0.4%</b>

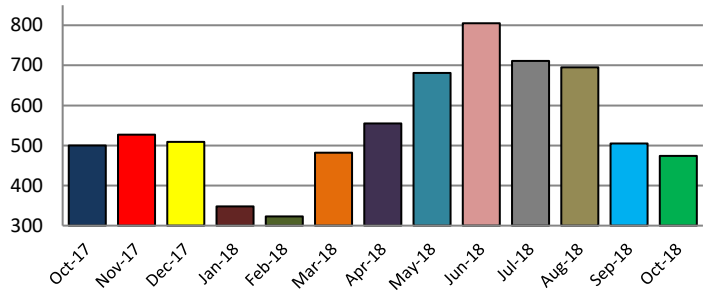
**SETTLEMENTS**

Price Range	New This Month			Year-To-Date		
	2017	2018	% Change	2017	2018	% Change
0 - 149,999	176	171	-2.8%	1933	1870	-3.3%
150,000 - 199,999	68	52	-23.5%	706	759	7.5%
200,000 - 299,999	98	90	-8.2%	1078	1090	1.1%
300,000 - 399,999	69	67	-2.9%	806	782	-3.0%
400,000 - 499,999	34	31	-8.8%	420	403	-4.0%
500,000 - 599,999	20	25	25.0%	208	250	20.2%
600,000 - 699,999	12	14	16.7%	151	169	11.9%
700,000 - 799,999	11	5	-54.5%	108	85	-21.3%
800,000 - 899,999	4	5	25.0%	55	58	5.5%
900,000 - 999,999	3	2	-33.3%	21	24	14.3%
1,000,000 - 1,999,999	4	12	200.0%	86	76	-11.6%
2,000,000 +	1	0	-100.0%	11	13	18.2%
<b>TOTALS</b>	<b>500</b>	<b>474</b>	<b>-5.2%</b>	<b>5583</b>	<b>5579</b>	<b>-0.1%</b>

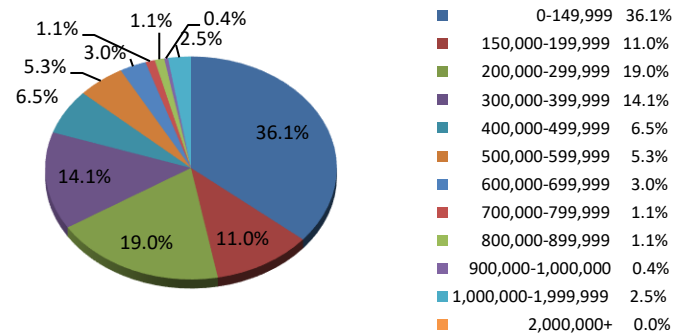
**INVENTORY TREND**  
Listings Active at End of Month



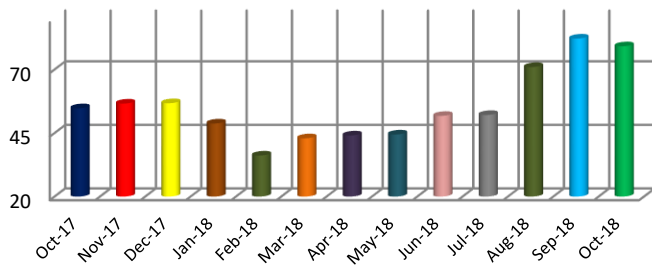
**SALES TREND**  
Settlements Per Month



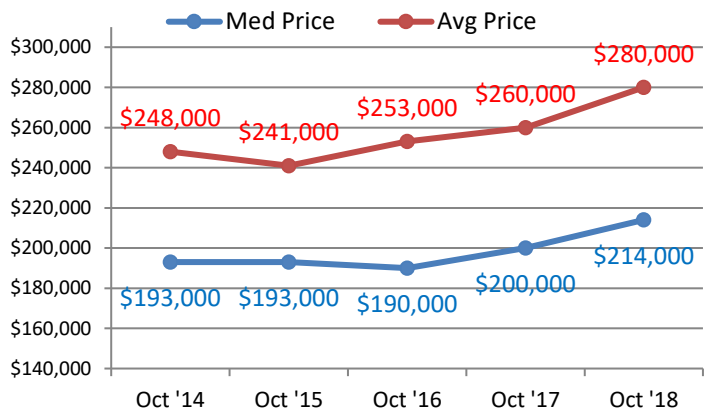
**SETTLEMENTS BY PRICE RANGE**



**AVERAGE DAYS ON MARKET**



**AVERAGE & MEDIAN PRICE**



DATA SOURCE: Trend Multiple Listing Service

NOTES: Properties not listed through this MLS are not reflected. The term "sales" represents ratified purchase contracts. Current year information is preliminary and subject to revision. Current year-to-date contract information may not equal the sum of the monthly contract totals reported above