

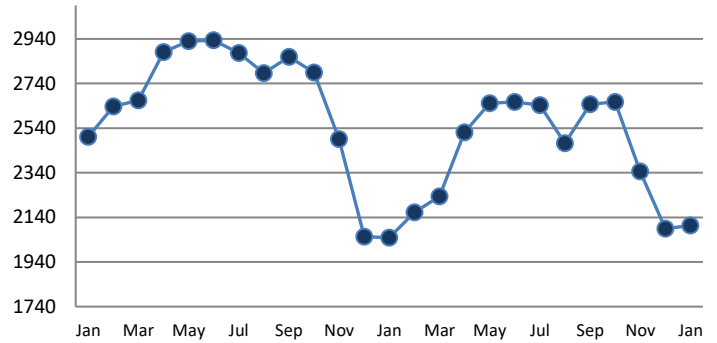
**PENDING**

Price Range	New This Month			Year-To-Date		
	2018	2019	% Change	2018	2019	% Change
0 - 149,999	62	75	21.0%	62	75	21.0%
150,000 - 199,999	64	60	-6.3%	64	60	-6.3%
200,000 - 299,999	176	210	19.3%	176	210	19.3%
300,000 - 399,999	126	147	16.7%	126	147	16.7%
400,000 - 499,999	68	63	-7.4%	68	63	-7.4%
500,000 - 599,999	26	34	30.8%	26	34	30.8%
600,000 - 699,999	22	21	-4.5%	22	21	-4.5%
700,000 - 799,999	9	8	-11.1%	9	8	-11.1%
800,000 - 899,999	5	5	0.0%	5	5	0.0%
900,000 - 999,999	2	4	100.0%	2	4	100.0%
1,000,000 - 1,999,999	11	8	-27.3%	11	8	-27.3%
2,000,000 +	3	1	-66.7%	3	1	-66.7%
<b>TOTALS</b>	<b>574</b>	<b>636</b>	<b>10.8%</b>	<b>574</b>	<b>636</b>	<b>10.8%</b>

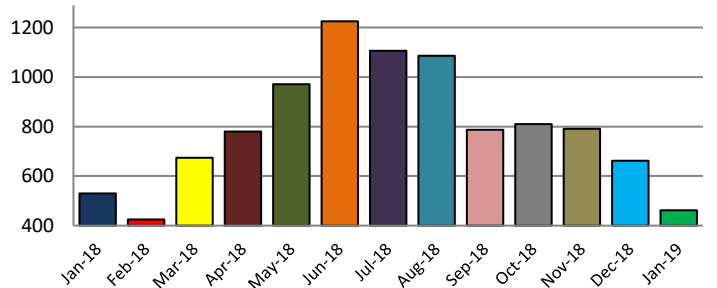
**SETTLEMENTS**

Price Range	New This Month			Year-To-Date		
	2018	2019	% Change	2018	2019	% Change
0 - 149,999	59	47	-20.3%	59	47	-20.3%
150,000 - 199,999	65	35	-46.2%	65	35	-46.2%
200,000 - 299,999	151	110	-27.2%	151	110	-27.2%
300,000 - 399,999	137	147	7.3%	137	147	7.3%
400,000 - 499,999	40	48	20.0%	40	48	20.0%
500,000 - 599,999	33	28	-15.2%	33	28	-15.2%
600,000 - 699,999	20	18	-10.0%	20	18	-10.0%
700,000 - 799,999	6	7	16.7%	6	7	16.7%
800,000 - 899,999	8	3	-62.5%	8	3	-62.5%
900,000 - 999,999	4	4	0.0%	4	4	0.0%
1,000,000 - 1,999,999	5	15	200.0%	5	15	200.0%
2,000,000 +	2	0	-100.0%	2	0	-100.0%
<b>TOTALS</b>	<b>530</b>	<b>462</b>	<b>-12.8%</b>	<b>530</b>	<b>462</b>	<b>-12.8%</b>

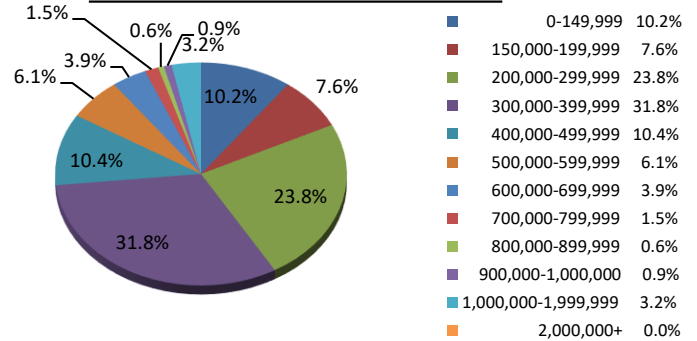
**INVENTORY TREND**  
*Listings Active at End of Month*



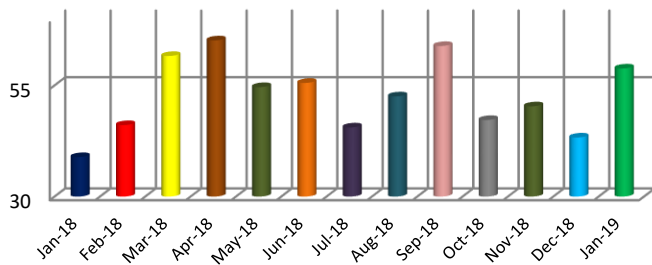
**SALES TREND**  
*Settlements Per Month*



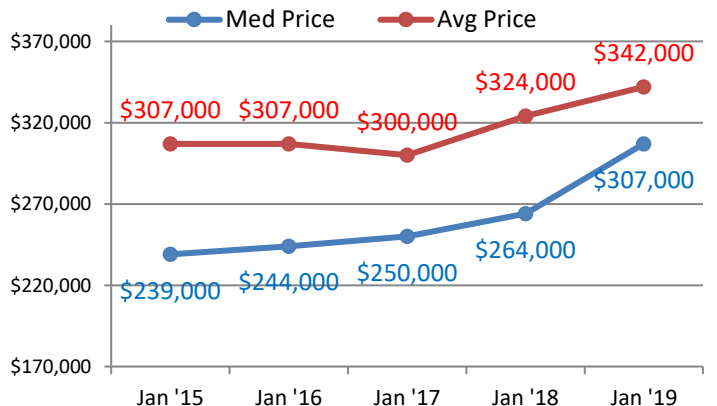
**SETTLEMENTS BY PRICE RANGE**



**AVERAGE DAYS ON MARKET**



**AVERAGE & MEDIAN PRICE**



DATA SOURCE: Trend Multiple Listing Service

NOTES: Properties not listed through this MLS are not reflected. The term "sales" represents ratified purchase contracts. Current year information is preliminary and subject to revision. Current year-to-date contract information may not equal the sum of the monthly contract totals reported above