

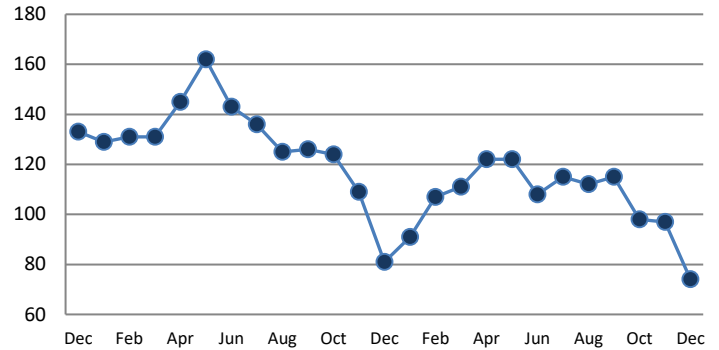
**PENDING**

Price Range	New This Month			Year-To-Date		
	2016	2017	% Change	2016	2017	% Change
0 - 149,999	69	55	-20.3%	1083	1018	-6.0%
150,000 - 199,999	64	69	7.8%	1175	1107	-5.8%
200,000 - 299,999	129	152	17.8%	3040	3227	6.2%
300,000 - 399,999	88	99	12.5%	2107	2280	8.2%
400,000 - 499,999	50	34	-32.0%	1044	1109	6.2%
500,000 - 599,999	28	28	0.0%	557	543	-2.5%
600,000 - 699,999	14	18	28.6%	316	343	8.5%
700,000 - 799,999	5	8	60.0%	199	200	0.5%
800,000 - 899,999	1	5	400.0%	92	103	12.0%
900,000 - 999,999	4	0	-100.0%	65	67	3.1%
1,000,000 - 1,999,999	4	5	25.0%	148	169	14.2%
2,000,000 +	2	3	50.0%	27	31	14.8%
<b>TOTALS</b>	<b>458</b>	<b>476</b>	<b>3.9%</b>	<b>9853</b>	<b>10197</b>	<b>3.5%</b>

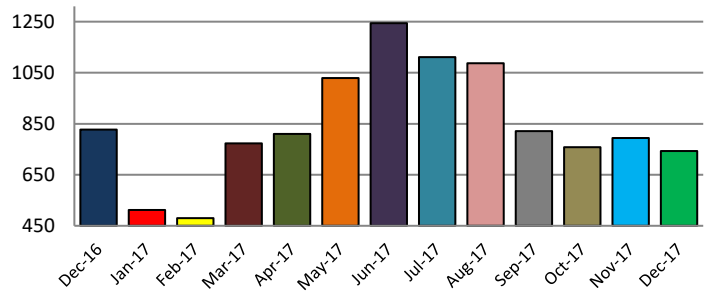
**SETTLEMENTS**

Price Range	New This Month			Year-To-Date		
	2016	2017	% Change	2016	2017	% Change
0 - 149,999	105	82	-21.9%	1082	1022	-5.5%
150,000 - 199,999	107	82	-23.4%	1189	1088	-8.5%
200,000 - 299,999	265	234	-11.7%	3124	3177	1.7%
300,000 - 399,999	169	156	-7.7%	2107	2245	6.5%
400,000 - 499,999	77	81	5.2%	1031	1147	11.3%
500,000 - 599,999	41	40	-2.4%	547	548	0.2%
600,000 - 699,999	23	26	13.0%	318	338	6.3%
700,000 - 799,999	14	17	21.4%	186	216	16.1%
800,000 - 899,999	8	6	-25.0%	84	108	28.6%
900,000 - 999,999	4	5	25.0%	63	71	12.7%
1,000,000 - 1,999,999	13	13	0.0%	147	168	14.3%
2,000,000 +	1	1	0.0%	24	34	41.7%
<b>TOTALS</b>	<b>827</b>	<b>743</b>	<b>-10.2%</b>	<b>9902</b>	<b>10162</b>	<b>2.6%</b>

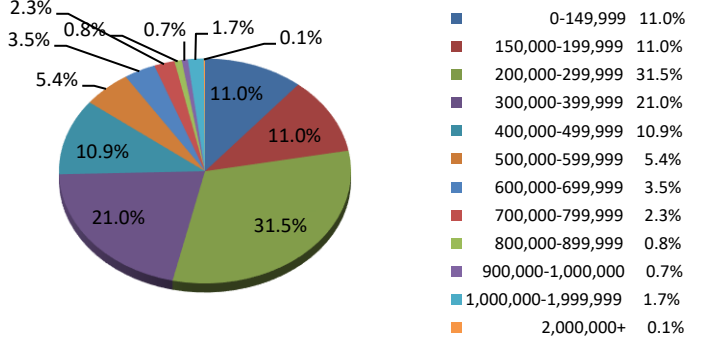
**INVENTORY TREND**  
Listings Active at End of Month



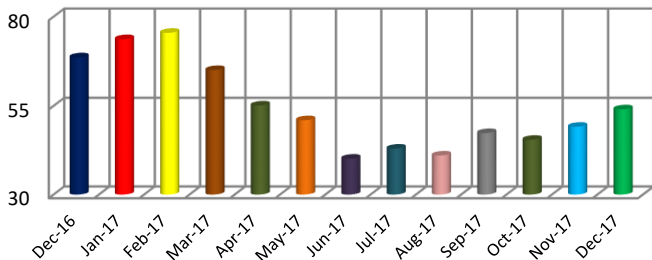
**SALES TREND**  
Settlements Per Month



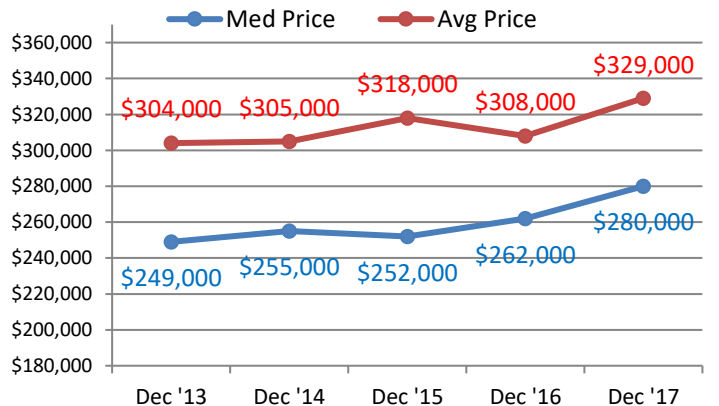
**SETTLEMENTS BY PRICE RANGE**



**AVERAGE DAYS ON MARKET**



**AVERAGE & MEDIAN PRICE**



DATA SOURCE: Trend Multiple Listing Service

NOTES: Properties not listed through this MLS are not reflected. The term "sales" represents ratified purchase contracts. Current year information is preliminary and subject to revision. Current year-to-date contract information may not equal the sum of the monthly contract totals reported above